

Please check the examination details below before entering your candidate information

Candidate surname

Other names

Pearson
Edexcel GCSE

Centre Number

| | | | | |
|--|--|--|--|--|
| | | | | |
|--|--|--|--|--|

Candidate Number

| | | | | |
|--|--|--|--|--|
| | | | | |
|--|--|--|--|--|

Wednesday 15 May 2019

Morning (Time: 1 hour 45 minutes)

Paper Reference **1PE0/01**

Physical Education

Component 1: Fitness and Body Systems

You do not need any other materials.

Total Marks

Instructions

- Use **black** ink or ball-point pen.
- **Fill in the boxes** at the top of this page with your name, centre number and candidate number.
- Answer **all** questions.
- Answer the questions in the spaces provided
– *there may be more space than you need.*

Information

- The total mark for this paper is 90.
- The marks for **each** question are shown in brackets
– *use this as a guide as to how much time to spend on each question.*

Advice

- Read each question carefully before you start to answer it.
- Try to answer every question.
- Check your answers if you have time at the end.

Turn over ►

P56388A

©2019 Pearson Education Ltd.

1/1/1/1



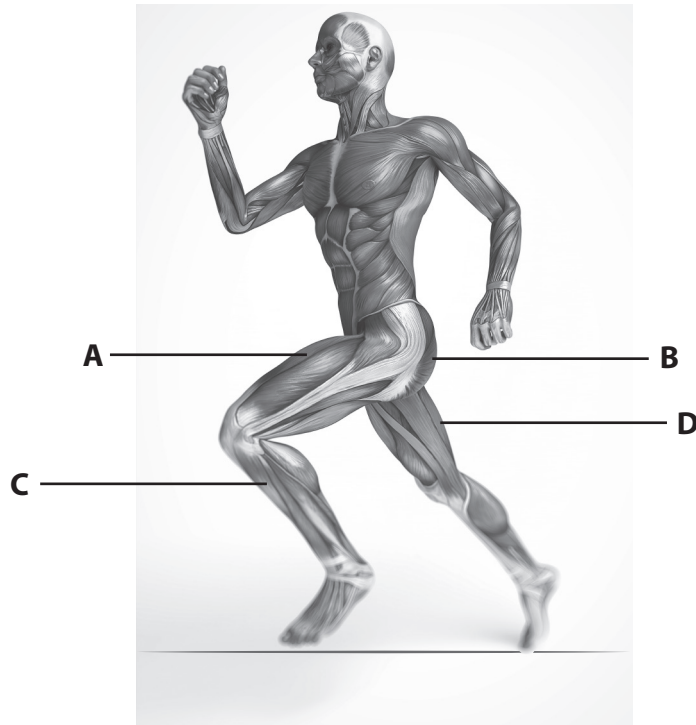
Pearson

Answer ALL questions.

Write your answers in the spaces provided.

Some questions must be answered with a cross in a box ☒. If you change your mind about an answer, put a line through the box ☒ and then mark your new answer with a cross ☒.

1 Figure 1 shows the muscular system while running.



(Source: © Sebastian Kaulitzki/Shutterstock)

Figure 1

For Questions 1(a), 1(b) and 1(c) use Figure 1 to decide whether A, B, C or D is correct.

(a) Which **one** of the following is the gluteus maximus?

(1)

- A Muscle A
- B Muscle B
- C Muscle C
- D Muscle D



(b) Which **one** of the following states the role of muscle D?

(1)

- A** Extension of the leg at the hip
- B** Extension of the leg at the knee
- C** Flexion of the leg at the knee
- D** Plantar flexion of the ankle

(c) Which **one** of the following muscles works antagonistically with muscle D?

(1)

- A** Muscle A
- B** Muscle B
- C** Muscle C
- D** Muscle D

(d) Which **one** of the following blood vessels carries oxygenated blood back to the heart?

(1)

- A** Aorta
- B** Pulmonary artery
- C** Pulmonary vein
- D** Vena cava

(e) Which **one** of the following is responsible for clotting the blood?

(1)

- A** Plasma
- B** Platelets
- C** Red blood cells
- D** White blood cells



(f) The data in **Table 1** shows oxygen levels in the blood before and after gas exchange.

| | Oxygen level before gas exchange | Oxygen level after gas exchange |
|----------|--|---|
| A | High | High |
| B | High | Low |
| C | Low | High |
| D | None | Low |

Table 1

Which **one** of the following is the **most** likely level of oxygen in the blood before and after gas exchange at the muscle during exercise?

(1)

- A** High – High
- B** High – Low
- C** Low – High
- D** None – Low

(g) Which **one** of the following is found inside the lungs?

(1)

- A** Bronchioles
- B** Diaphragm
- C** Semi-lunar valves
- D** Septum

DO NOT WRITE IN THIS AREA

DO NOT WRITE IN THIS AREA

DO NOT WRITE IN THIS AREA

DO NOT WRITE IN THIS AREA

DO NOT WRITE IN THIS AREA

DO NOT WRITE IN THIS AREA



(h) Target zones are used to make sure training is at the correct intensity.

Figure 2 shows the heart rate values for four 16-year-old students during a training session.

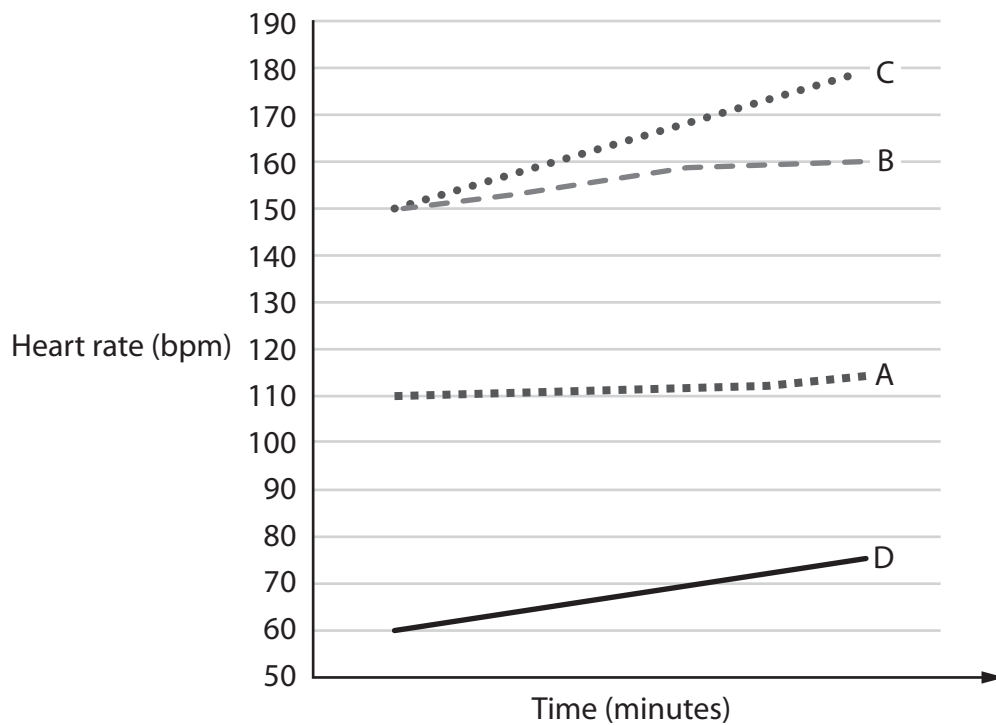


Figure 2

Analyse the data in **Figure 2** to determine which 16-year-old student was working in his aerobic training zone.

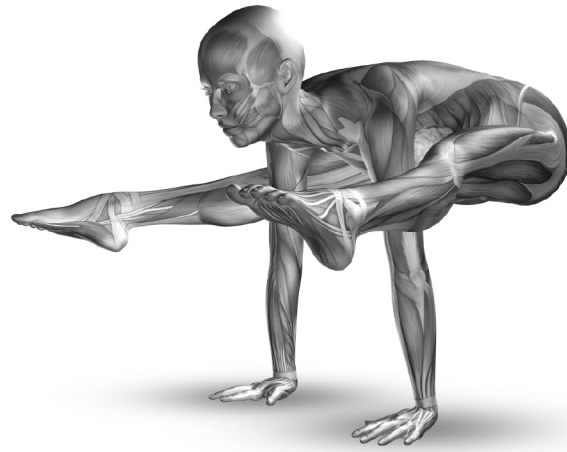
(1)

- A** Student A
- B** Student B
- C** Student C
- D** Student D

(Total for Question 1 = 8 marks)



2 **Figure 3** shows the muscular system of a gymnast.



(Source: © Kjpgar/ Shutterstock)

Figure 3

(a) Examine the antagonistic muscle action taking place at the elbow in **Figure 3** that allows the gymnast to achieve this position.

(3)

.....

.....

.....

.....

.....

(b) The gymnast in **Figure 3** is supporting her body weight using the bones in the wrist.

Classify the bones of the wrist.

(1)

.....

DO NOT WRITE IN THIS AREA

DO NOT WRITE IN THIS AREA

DO NOT WRITE IN THIS AREA

DO NOT WRITE IN THIS AREA

DO NOT WRITE IN THIS AREA

DO NOT WRITE IN THIS AREA



(c) Explain, using examples, **two** functions of the skeletal system that help the gymnast move her lower body into this position.

(i) Function 1

(3)

.....

.....

.....

.....

.....

.....

(ii) Function 2

(3)

.....

.....

.....

.....

.....

.....

(Total for Question 2 = 10 marks)



3 **Figure 4** shows a basketball player jumping to shoot at the basket.



(Source: © icsnaps/Shutterstock)

Figure 4

(a) Explain the **main** muscle fibre type that is used to jump high when taking the basketball shot.

(3)

.....

.....

.....

.....

.....

.....

DO NOT WRITE IN THIS AREA

DO NOT WRITE IN THIS AREA

DO NOT WRITE IN THIS AREA

DO NOT WRITE IN THIS AREA

DO NOT WRITE IN THIS AREA

DO NOT WRITE IN THIS AREA



(b) During a game of basketball vascular shunting takes place.

Describe what happens to blood flow during vascular shunting.

(4)

.....

.....

.....

.....

.....

.....

.....

.....

.....

.....

(c) Explain **one** reason why vascular shunting is necessary during a game of basketball.

(3)

.....

.....

.....

.....

.....

.....

.....

.....

.....

.....

.....

.....

.....

.....

.....

.....

.....

.....

.....

.....

.....

.....

(Total for Question 3 = 10 marks)



4 Exercise causes short-term effects on our body systems.

Complete **Table 2** by:

- (a) Stating **one** short-term effect of exercise on each of the named body systems.
- (b) Giving a specific example of the importance of this short-term effect on the performer during exercise.

| | (a) Short-term effect of exercise | (b) Importance to the performer exercising |
|-----------------------|-----------------------------------|--|
| Cardiovascular system | (1) | (1) |
| Muscular system | (1) | (1) |
| Respiratory system | (1) | (1) |

Table 2

(Total for Question 4 = 6 marks)

DO NOT WRITE IN THIS AREA

DO NOT WRITE IN THIS AREA

DO NOT WRITE IN THIS AREA

DO NOT WRITE IN THIS AREA

DO NOT WRITE IN THIS AREA

DO NOT WRITE IN THIS AREA



5 **Figure 5** shows a performer during a weight training session.



(Source: © Nicholas Piccillo/Shutterstock)

Figure 5

(a) Identify the class of lever system in use when the performer moves from standing onto her toes in **Figure 5**.

(1)

.....

.....

(b) Give another example of the use of **this** lever system, at the ankle, in a sporting situation of your choice.

(1)

.....

.....

(c) The lever system being used in **Figure 5** provides a mechanical advantage.

Define the meaning of the term mechanical advantage.

(1)

.....

.....

.....

.....

(Total for Question 5 = 3 marks)



P 5 6 3 8 8 A 0 1 1 2 8

6 Complete the following statements about movement patterns.

(a) Movement patterns occur in body planes and around

.....

(1)

(b) There are three main body planes: sagittal, transverse and

.....

(1)

(c) A tucked front somersault takes place in the sagittal plane around the

.....

(1)

(d) A full twist occurs in the transverse plane around the

.....

(1)

(Total for Question 6 = 4 marks)

DO NOT WRITE IN THIS AREA

DO NOT WRITE IN THIS AREA

DO NOT WRITE IN THIS AREA

DO NOT WRITE IN THIS AREA

DO NOT WRITE IN THIS AREA

DO NOT WRITE IN THIS AREA



7 Health and fitness can be affected by exercise.

(a) Define the terms health and fitness.

(i) Health

(1)

.....

.....

.....

.....

.....

.....

(ii) Fitness

(1)

.....

.....

.....

.....

.....

.....



(b) State, using an example, how exercise can affect health and fitness.

(2)

(i) Effect of exercise on health

.....

.....

.....

.....

.....

.....

(ii) Effect of exercise on fitness

(2)

.....

.....

.....

.....

.....

.....

(Total for Question 7 = 6 marks)

DO NOT WRITE IN THIS AREA

DO NOT WRITE IN THIS AREA

DO NOT WRITE IN THIS AREA

DO NOT WRITE IN THIS AREA

DO NOT WRITE IN THIS AREA

DO NOT WRITE IN THIS AREA



9 Fitness tests are designed to test specific components of fitness.

Complete **Table 3** by:

- (a) Stating the fitness test used to measure the component of fitness.
- (b) Stating a different sport or physical activity, for each of the components, in which an excellent rating would be an advantage.

| Component of fitness | (a) Fitness test to measure the component of fitness | (b) Sport or physical activity in which an excellent rating would be an advantage |
|-------------------------------|---|--|
| Cardiovascular fitness | (1) | (1) |
| Speed | (1) | (1) |

Table 3

DO NOT WRITE IN THIS AREA

DO NOT WRITE IN THIS AREA

DO NOT WRITE IN THIS AREA

DO NOT WRITE IN THIS AREA

DO NOT WRITE IN THIS AREA

DO NOT WRITE IN THIS AREA



(c) Georgia is a long distance swimmer. She took part in some fitness tests. Her ratings for these fitness tests are shown in **Table 4**.

| Fitness test | Rating |
|---------------------------|-----------|
| Illinois agility run test | Excellent |
| Vertical jump test | Excellent |
| One-minute press-up test | Poor |
| Harvard step test | Excellent |

Table 4

Identify, using the data in **Table 4**, the component of fitness Georgia should focus on to improve her long distance swimming.

(1)

(d) Explain **one** fitness class Georgia should attend to make her performance in the Harvard step test even better.

(3)

(Total for Question 9 = 8 marks)



10 Maddie is a 15-year-old cross-country runner. She trains regularly for her event.

An outline of one week of her training is shown in **Table 5**.

| Day of week | Activity | Length of session |
|-------------|---|-------------------|
| Sunday | Run at varying intensities through woodland | 60 minutes |
| Monday | Rest | |
| Tuesday | Laps around the park varying her pace, running at 60% – 80% of her maximum heart rate | 75 minutes |
| Wednesday | Rest | |
| Thursday | Run at varying intensities along the beach | 60 minutes |
| Friday | Rest | |
| Saturday | X-country race | |

Table 5

Use the information in **Table 5** to answer all parts of this question.

(a) Identify the training method Maddie is using in her training sessions. (1)

(b) State the component of fitness Maddie is training in these sessions. (1)

DO NOT WRITE IN THIS AREA

DO NOT WRITE IN THIS AREA

DO NOT WRITE IN THIS AREA

DO NOT WRITE IN THIS AREA

DO NOT WRITE IN THIS AREA

DO NOT WRITE IN THIS AREA



(c) Explain **two** principles of training Maddie has applied to her training sessions.

(2)

(i) Principle of training 1

.....

.....

.....

.....

.....

.....

(2)

(ii) Principle of training 2

.....

.....

.....

.....

.....

.....

(d) Give an example that shows how Maddie could apply the principle of progressive overload to one of her training sessions.

(1)

.....

.....

.....

.....

(Total for Question 10 = 7 marks)



11 **Figure 6** shows Mason during a training session.

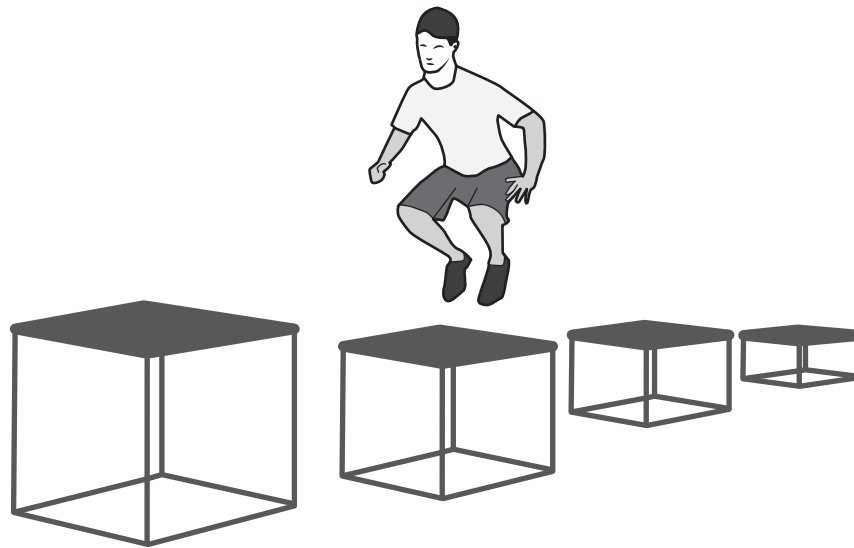


Figure 6

(a) Identify, using **Figure 6**, the method of training Mason is using.

(1)

(b) State **one** advantage and **one** disadvantage of the training method shown in **Figure 6**.

(i) Advantage

(1)

(ii) Disadvantage

(1)

(Total for Question 11 = 3 marks)

DO NOT WRITE IN THIS AREA

DO NOT WRITE IN THIS AREA

DO NOT WRITE IN THIS AREA

DO NOT WRITE IN THIS AREA

DO NOT WRITE IN THIS AREA

DO NOT WRITE IN THIS AREA



12 Performers who take performance enhancing drugs (PED) risk disqualification and ill-health but still take them for the benefits they can bring.

Complete **Table 6** by:

- (a) Stating a positive effect of the PED.
- (b) Identifying a sport or physical activity where taking the PED would increase chance of success in that sport or physical activity.

| | (a) Positive effect of the PED | (b) Sport or physical activity where taking the PED would increase chance of success |
|--------------------------|--------------------------------|--|
| Anabolic steroids | (1) | (1) |
| Beta blockers | (1) | (1) |

Table 6

(Total for Question 12 = 4 marks)



13 Tennis players will work at different intensities during a match.

Figure 7 shows three different phases of a tennis match.



During a serve

During a long intense rally

Resting between games

(Source: © Clive Brunskill/Getty Images)
(Source: © Julian Finney/Getty Images)
(Source: © Andrew Yates/Getty Images)

Figure 7

Examine the importance of the respiratory system during the different phases shown in Figure 7.

(9)

.....

.....

.....

.....

.....

.....

.....

.....

.....

.....

.....

.....

.....

.....

.....

.....

.....

.....

.....

.....

.....

.....

.....

DO NOT WRITE IN THIS AREA

DO NOT WRITE IN THIS AREA

DO NOT WRITE IN THIS AREA

DO NOT WRITE IN THIS AREA



DO NOT WRITE IN THIS AREA

DO NOT WRITE IN THIS AREA

DO NOT WRITE IN THIS AREA

DO NOT WRITE IN THIS AREA

DO NOT WRITE IN THIS AREA

DO NOT WRITE IN THIS AREA

Large writing area with horizontal dotted lines.





DO NOT WRITE IN THIS AREA

DO NOT WRITE IN THIS AREA

Handwriting practice area with 15 horizontal dotted lines.

(Total for Question 13 = 9 marks)

DO NOT WRITE IN THIS AREA

DO NOT WRITE IN THIS AREA

DO NOT WRITE IN THIS AREA

DO NOT WRITE IN THIS AREA



DO NOT WRITE IN THIS AREA

DO NOT WRITE IN THIS AREA

DO NOT WRITE IN THIS AREA

DO NOT WRITE IN THIS AREA

DO NOT WRITE IN THIS AREA

DO NOT WRITE IN THIS AREA

BLANK PAGE



14 Dan trains regularly to improve his shot put performance and his general fitness.

Figure 8 shows Dan during a shot put competition.

Table 7 shows some of the long-term training effects on his body systems.



Figure 8

| Long-term training effects |
|------------------------------|
| Increased bone density |
| Decreased resting heart rate |
| Muscle hypertrophy |

Table 7

(Source: © Jim Parkin/Shutterstock)

Evaluate the training methods causing these long-term effects and their impact on Dan's shot put performance.

(9)

.....

.....

.....

.....

.....

.....

.....

.....

.....

.....

.....

.....

.....

.....

.....

.....

.....

.....

.....

.....

.....

.....

DO NOT WRITE IN THIS AREA

DO NOT WRITE IN THIS AREA

DO NOT WRITE IN THIS AREA

DO NOT WRITE IN THIS AREA

DO NOT WRITE IN THIS AREA

DO NOT WRITE IN THIS AREA



DO NOT WRITE IN THIS AREA

DO NOT WRITE IN THIS AREA

DO NOT WRITE IN THIS AREA

DO NOT WRITE IN THIS AREA

DO NOT WRITE IN THIS AREA

DO NOT WRITE IN THIS AREA

Large writing area with horizontal dotted lines.



DO NOT WRITE IN THIS AREA

DO NOT WRITE IN THIS AREA

DO NOT WRITE IN THIS AREA

.....

.....

.....

.....

.....

.....

.....

.....

.....

.....

.....

.....

.....

.....

.....

.....

.....

.....

.....

.....

.....

.....

.....

.....

(Total for Question 14 = 9 marks)

TOTAL FOR PAPER = 90 MARKS

