



Oxford Cambridge and RSA

**Wednesday 11 November 2020 – Morning**

**GCSE (9–1) Geography B  
(Geography for Enquiring Minds)**

**J384/01** Our Natural World

Resource Booklet

**Time allowed: 1 hour 15 minutes**



**INSTRUCTIONS**

- Do **not** send this Resource Booklet for marking. Keep it in the centre or recycle it.

**INFORMATION**

- This document has **8** pages.

Fig. 1 – Photograph of a natural weather hazard



Fig. 2 – A hydrograph showing precipitation and discharge of a river

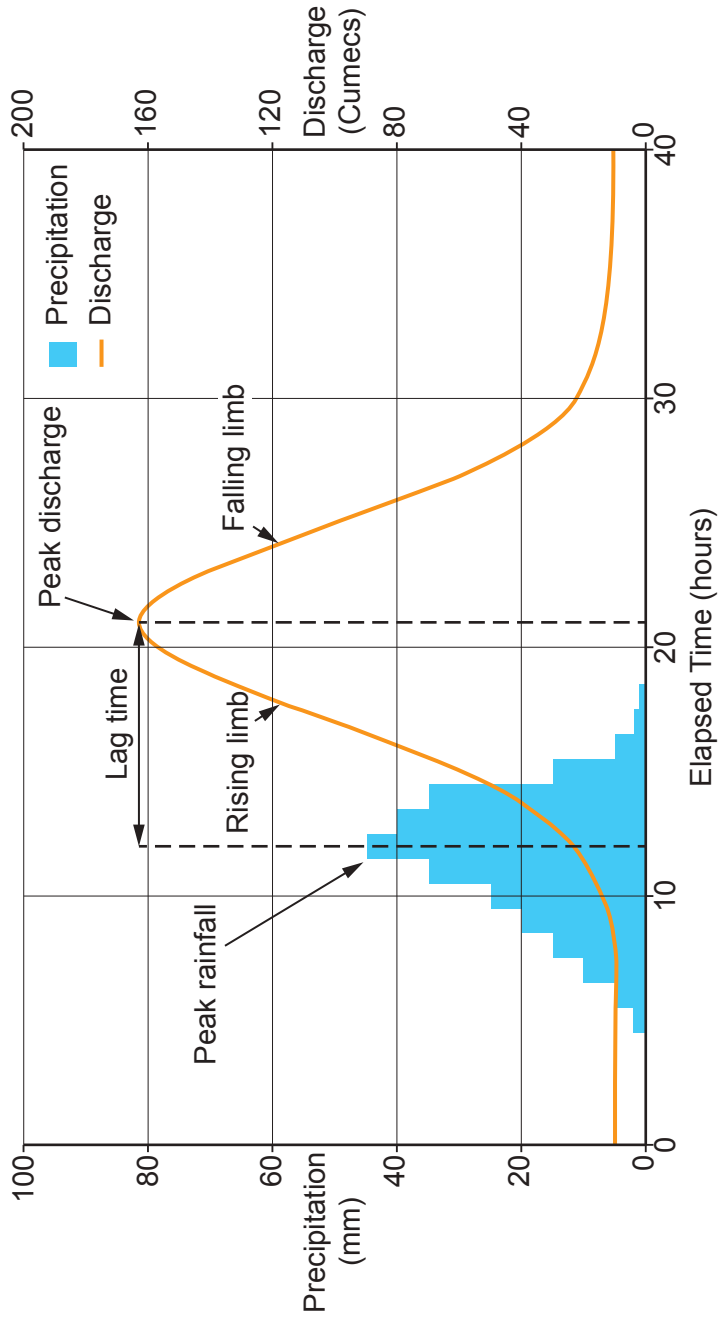


Fig. 3 – Global distribution of earthquakes in the year 2000

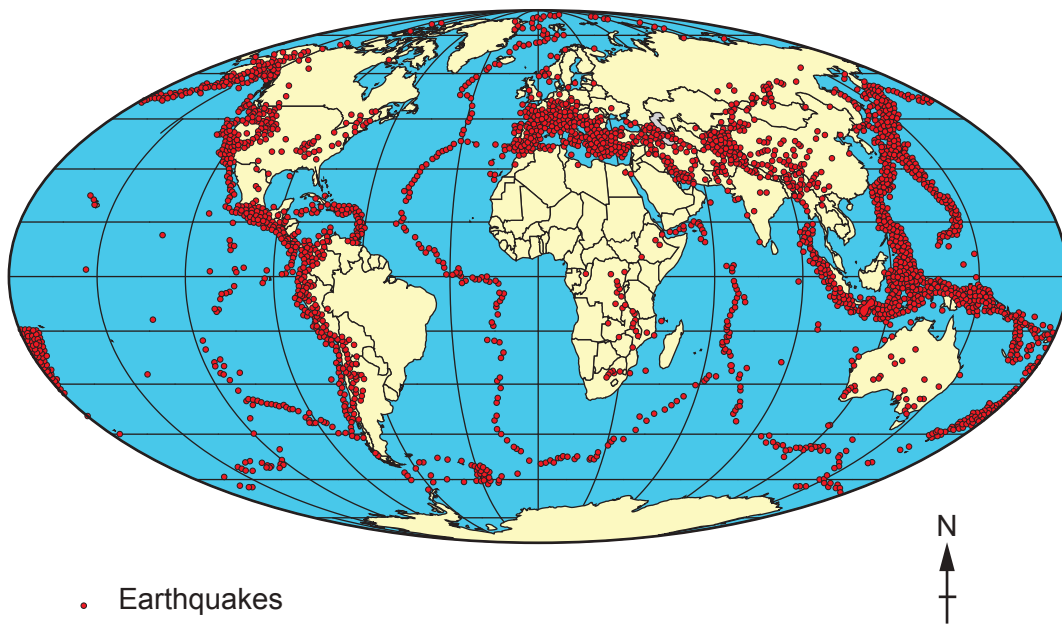
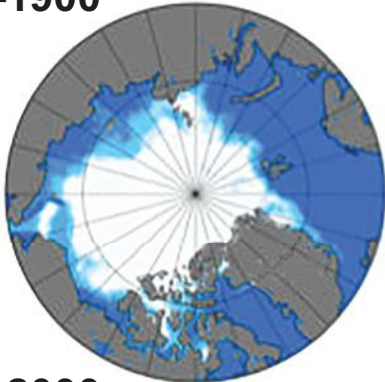
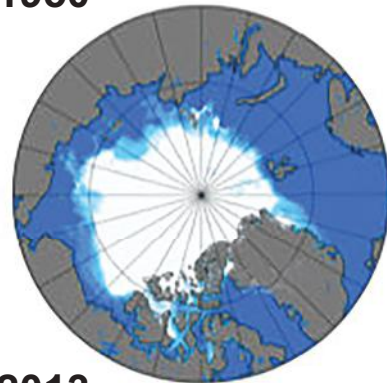


Fig. 4 – Changes in Arctic sea ice positions

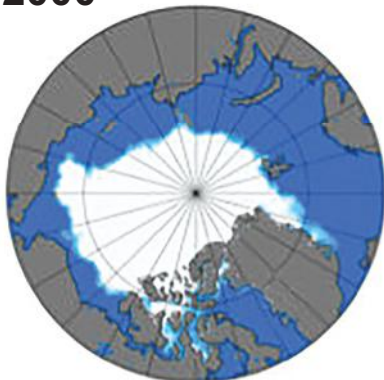
1850–1900



1901–1950



1951–2000



2000–2013

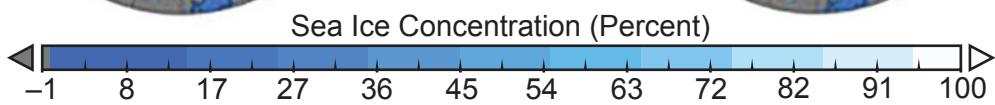
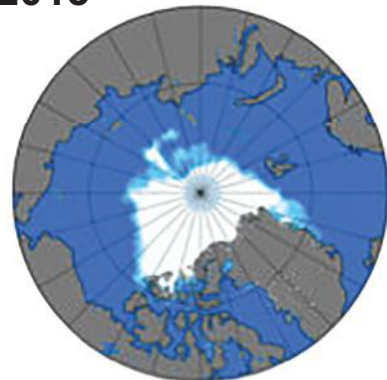


Fig. 5 – The maximum extent of ice in the last glacial stage in Britain (70 000 to 10 000 years ago)

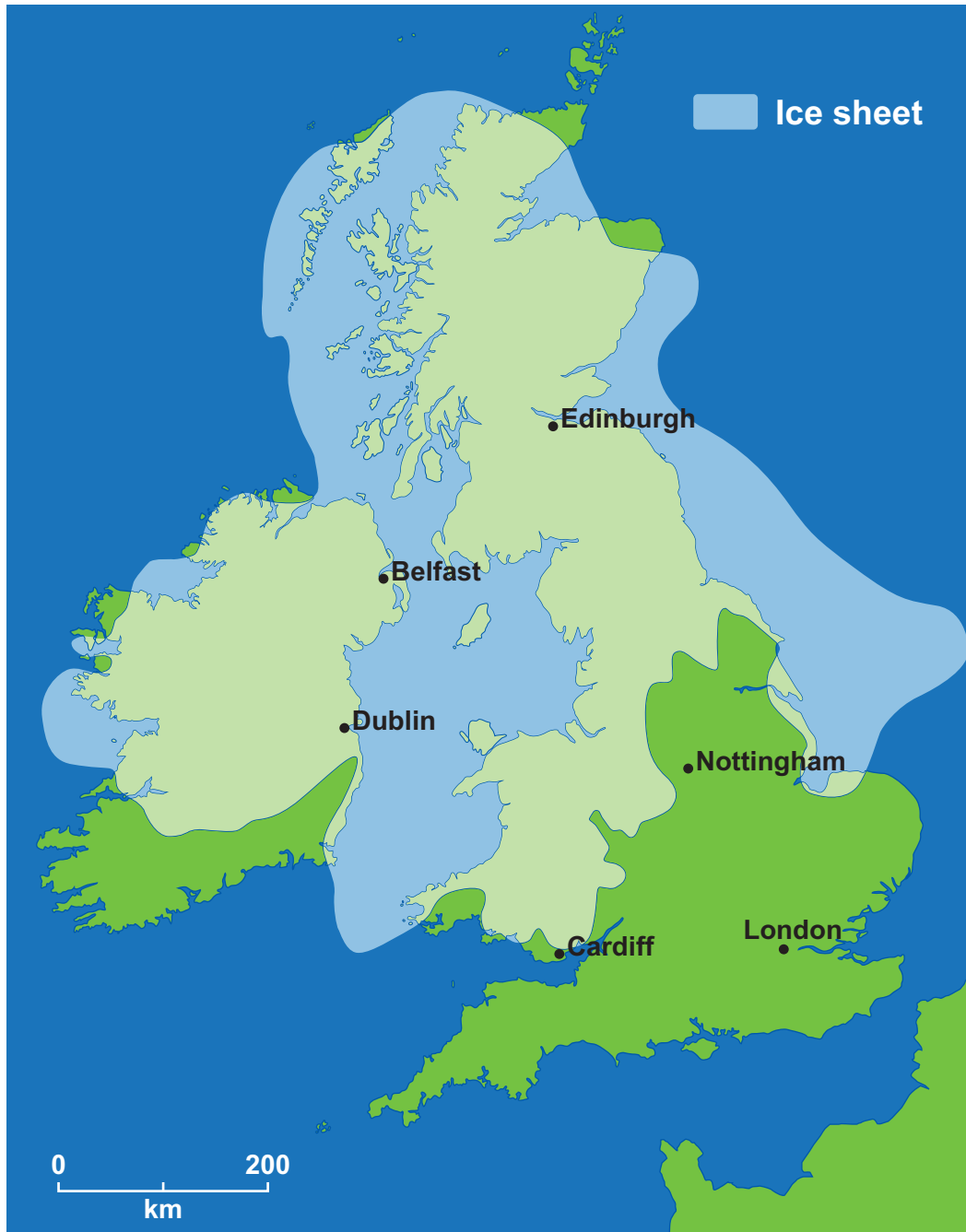




Fig. 6 – A cartoon about Earth Day in 2035

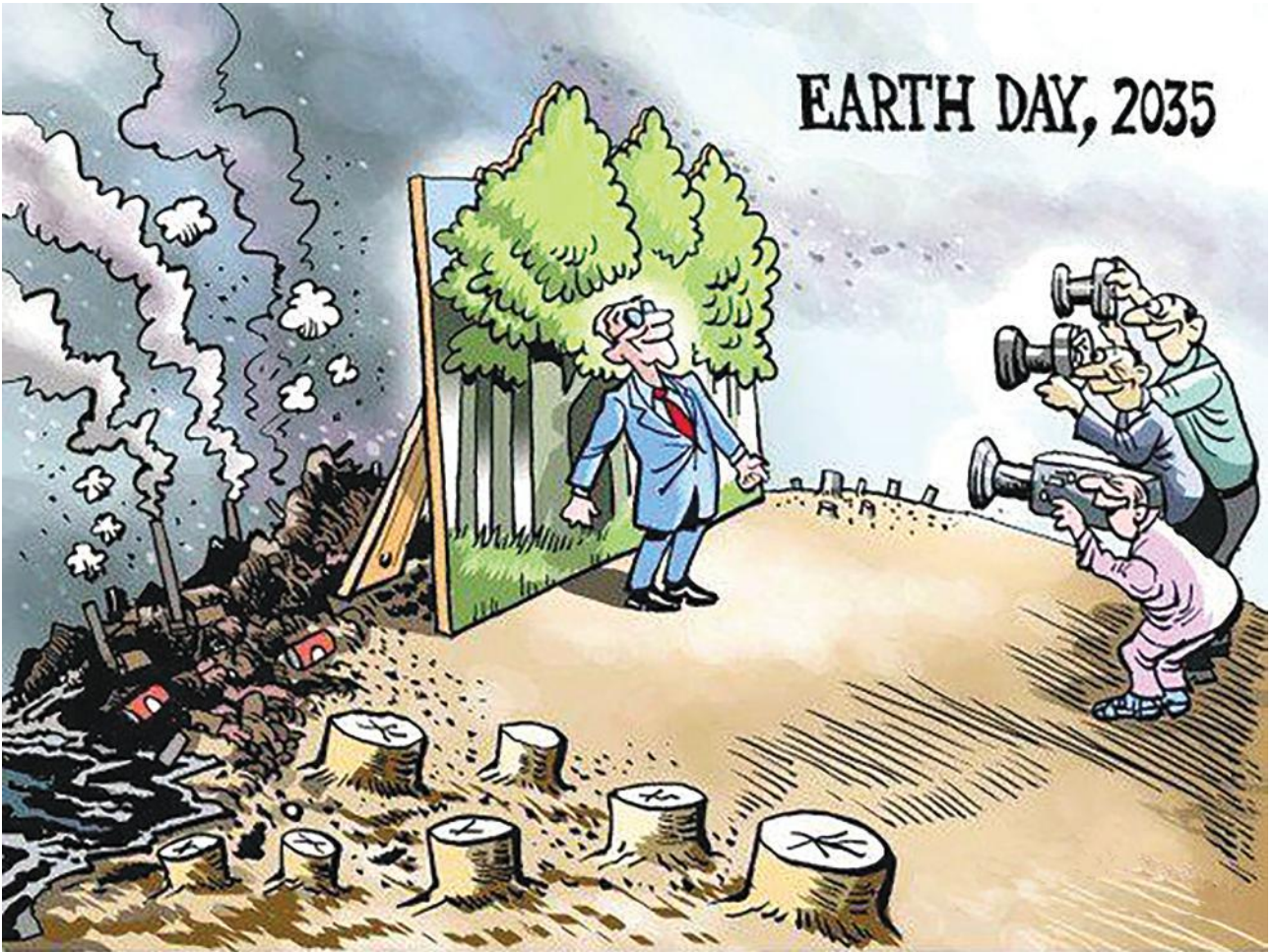




Fig. 7 – Photograph showing part of the River Lune



---

# OCR

Oxford Cambridge and RSA

## Copyright Information

OCR is committed to seeking permission to reproduce all third-party content that it uses in its assessment materials. OCR has attempted to identify and contact all copyright holders whose work is used in this paper. To avoid the issue of disclosure of answer-related information to candidates, all copyright acknowledgements are reproduced in the OCR Copyright Acknowledgements Booklet. This is produced for each series of examinations and is freely available to download from our public website ([www.ocr.org.uk](http://www.ocr.org.uk)) after the live examination series.

If OCR has unwittingly failed to correctly acknowledge or clear any third-party content in this assessment material, OCR will be happy to correct its mistake at the earliest possible opportunity.

For queries or further information please contact The OCR Copyright Team, The Triangle Building, Shaftesbury Road, Cambridge CB2 8EA.

OCR is part of the Cambridge Assessment Group; Cambridge Assessment is the brand name of University of Cambridge Local Examinations Syndicate (UCLES), which is itself a department of the University of Cambridge.