

Please check the examination details below before entering your candidate information

Candidate surname

Other names

Centre Number

Candidate Number

--	--	--	--	--

--	--	--	--

Pearson Edexcel Level 3 GCE

Time 2 hours

Paper
reference

8MA0/01

Mathematics

Advanced Subsidiary

PAPER 1: Pure Mathematics

You must have:

Mathematical Formulae and Statistical Tables (Green), calculator

Total Marks

Candidates may use any calculator allowed by Pearson regulations. Calculators must not have the facility for symbolic algebra manipulation, differentiation and integration, or have retrievable mathematical formulae stored in them.

Instructions

- Use **black** ink or ball-point pen.
- If pencil is used for diagrams/sketches/graphs it must be dark (HB or B).
- **Fill in the boxes** at the top of this page with your name, centre number and candidate number.
- Answer **all** questions and ensure that your answers to parts of questions are clearly labelled.
- Answer the questions in the spaces provided
– *there may be more space than you need.*
- You should show sufficient working to make your methods clear. Answers without working may not gain full credit.
- Inexact answers should be given to three significant figures unless otherwise stated.

Information

- A booklet 'Mathematical Formulae and Statistical Tables' is provided.
- There are 14 questions in this question paper. The total mark for this paper is 100.
- The marks for **each** question are shown in brackets
– *use this as a guide as to how much time to spend on each question.*

Advice

- Read each question carefully before you start to answer it.
- Try to answer every question.
- Check your answers if you have time at the end.

Turn over ►

P69201A

©2022 Pearson Education Ltd.

Q:1/1/1/




Pearson

1. Find

$$\int \left(8x^3 - \frac{3}{2\sqrt{x}} + 5 \right) dx$$

giving your answer in simplest form.

(4)

DO NOT WRITE IN THIS AREA

DO NOT WRITE IN THIS AREA

DO NOT WRITE IN THIS AREA



10.

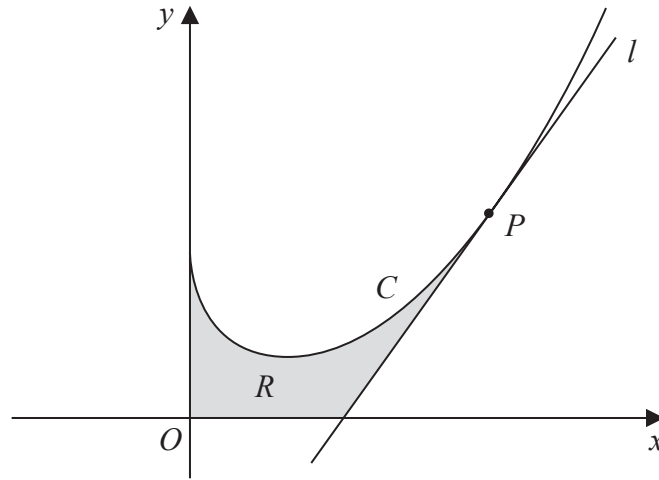


Figure 2

In this question you must show all stages of your working.

Solutions relying on calculator technology are not acceptable.

Figure 2 shows a sketch of part of the curve C with equation

$$y = \frac{1}{3}x^2 - 2\sqrt{x} + 3 \quad x \geq 0$$

The point P lies on C and has x coordinate 4

The line l is the tangent to C at P .

(a) Show that l has equation

$$13x - 6y - 26 = 0 \tag{5}$$

The region R , shown shaded in Figure 2, is bounded by the y -axis, the curve C , the line l and the x -axis.

(b) Find the exact area of R . (5)

DO NOT WRITE IN THIS AREA

DO NOT WRITE IN THIS AREA

DO NOT WRITE IN THIS AREA



11.

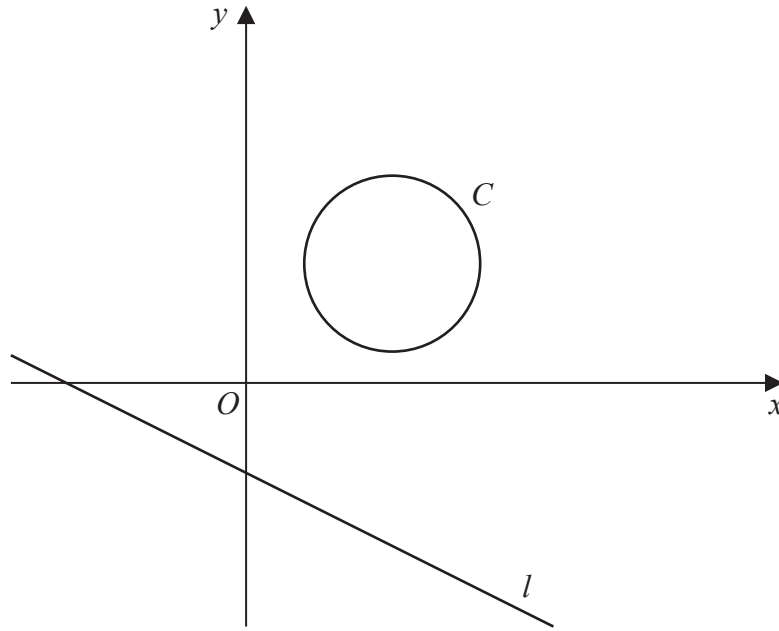


Figure 3

Figure 3 shows the circle C with equation

$$x^2 + y^2 - 10x - 8y + 32 = 0$$

and the line l with equation

$$2y + x + 6 = 0$$

(a) Find

- (i) the coordinates of the centre of C ,
- (ii) the radius of C .

(3)

(b) Find the shortest distance between C and l .

(5)

DO NOT WRITE IN THIS AREA

DO NOT WRITE IN THIS AREA

DO NOT WRITE IN THIS AREA



13.

In this question you must show all stages of your working.**Solutions relying entirely on calculator technology are not acceptable.**

(a) Show that

$$\frac{1}{\cos \theta} + \tan \theta \equiv \frac{\cos \theta}{1 - \sin \theta} \quad \theta \neq (2n + 1)90^\circ \quad n \in \mathbb{Z} \quad (3)$$

Given that $\cos 2x \neq 0$ (b) solve for $0 < x < 90^\circ$

$$\frac{1}{\cos 2x} + \tan 2x = 3 \cos 2x$$

giving your answers to one decimal place.

(5)



